

SOUTHERN UNIVERSITY COLLEGE OF BUSINESS

*presents*



11<sup>th</sup> ANNUAL

# GALA

## ON THE BLUFF

2013

JOIN US AND THE 2013 HEADLINING ACT

### THE EMOTIONS

FRIDAY, OCTOBER 25, 2013, 8:00 p.m.

BELLE OF BATON ROUGE CASINO & HOTEL

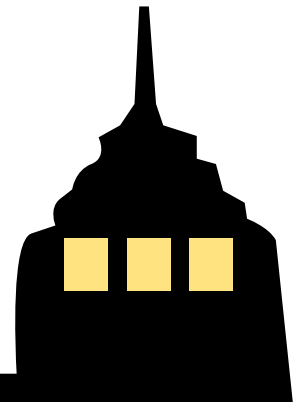
[www.galaonthebluff.net](http://www.galaonthebluff.net)



# Gala Entertainment



THE EMOTIONS



## Performing Artists

THE EMOTIONS (HEADLINER)

THE MICHAEL FOSTER PROJECT

HARRY ANDERSON &  
THE JAZZY JAZZ BAND

featuring MR. EARNEST JACKSON

GOOD EVENING AND WELCOME

*To the* **11th Annual**  
*Gala on the Bluff*

Highlights of Tonight's Festivities:

- Enjoy a fantastic fusion of jazz, funk, and R&B by some of the hottest performers in the nation
- Tempt your palate with epicurean delights from several food and beverage venues located in Iberville A, B, and C
- Food services will be available from 8:15 p.m. – 10:30 p.m.
- Beverage services will be available from 8:00 p.m. – 1:00 a.m.





## GREETINGS

### SOUTHERN UNIVERSITY AND A & M COLLEGE



#### MESSAGE FROM THE CHANCELLOR

Welcome to the Eleventh Annual Gala on the Bluff, the principal fundraiser and support arm of the College of Business at Southern University and A & M College! Your presence this evening is indicative of your commitment to this worthwhile cause. Each year, this gathering serves as a forum where old acquaintances and friendships can be renewed, new ones can be formed, and our dedication and loyalty to the University can be reinforced. It is my fervent hope that you will continue to be an integral supporter of this event for many years to come.

Your generous support greatly enhances the programs and services we offer our dedicated business students and scholars who study, teach, and conduct research on the Bluffs of the mighty Mississippi River. By investing in them, you empower a new cadre of Southern University graduates who can competently conduct business from Wall Street to Main Street and across the globe. Your assistance helps the College of Business bring into our nation's economy men and women equipped with the necessary business acumen to succeed at any level. We do so while remaining responsive to the unique and historic mission of our great institution -- Southern University.

Your presence at tonight's festivities adds immensely to the camaraderie that is shared between the members of the Jaguar Nation. I invite you to let your passion for Dear ole Southern unite with your passion for good food, quality friendships and great music to make this evening special!

Southern University and A & M College is the aggregate of its component parts – students, scholars, staff members, alumni, supporters, friends and guests! As Chancellor, I thank each of you in your various roles for the contributions you make to the success of this great institution of higher learning. Have a great time throughout the Homecoming Weekend!

*Sincerely,*

*James Llorens  
Chancellor- SUBR*

#### MESSAGE FROM CHAIRMAN OF THE ADVISORY COUNCIL

On behalf of the College of Business Advisory Council, it is my pleasure to welcome you to the Eleventh Annual Gala on the Bluff. We would like to express our sincere thanks for your continued support and patronage of the Gala, which provides funding to benefit the College of Business at Southern University and A&M College. The Advisory Council is indeed appreciative of our steering committee, host committee, and volunteers who worked endless hours to make this event a marvelous success. My gratitude goes to the sponsors of the 2013 Gala on the Bluff, especially our top sponsors: Mr. Louis Henry- Franchise Food Systems of Minnesota, Inc. & Agnes Andrews All State Insurance Agency.

I am also appreciative of the many firms and individuals who purchased feature packages and tickets. Your continued support shows that you value education and are willing to support tomorrow's global business leaders. As envisioned by the Advisory Council, this is one of the most anticipated gatherings of the year. Gala on the Bluff is a social magnet that eclipses racial and economic barriers to draw a diverse group of people together to celebrate great music and enjoy wonderful food as they support scholarships for students and educational programming needs. Thank you for supporting the Eleventh Annual Gala on the Bluff and we look forward to your participation next year.

*Sincerely,*

*George Rogers Jr., CPA  
Chairman  
Southern University College of Business  
Advisory Council  
SU Class of '69*



## GREETINGS

### SOUTHERN UNIVERSITY AND A & M COLLEGE



#### MESSAGE FROM THE DEAN

On behalf of the College of Business at Southern University in Baton Rouge, Louisiana, we would like to thank you for supporting this wonderful program. I especially thank our 2013 sponsors both major and in-kind whose support was tremendous and indispensable in establishing this activity as a signature fundraiser for the College. The Gala on the Bluff Host Committee chaired by Kimberly Stevens has been and continues to be a great asset in making the “Gala” the premier activity that it has become during our homecoming. I want to acknowledge Dr. Janet Rami, Mr. Anthony Williams, and Mr. Leon Valdry for serving as our Honoree Host Committee Chairs. Your contributions to Gala on the Bluff will generate scholarships for our students and support for educational programming needs. This year’s Gala has special relevance, as scholarship support to our students is critical to the success in developing great academic and professional outcomes for our stakeholders.

As you enjoy the splendid music of the nationally and internationally known entertainers and personalities, you can be justifiably proud that you are investing in tomorrow’s business and community leaders. Recipients of the 2012-13 Gala Scholarships are evidence of the success that we can achieve when the community, businesses and academia work in partnership to achieve a common goal. The new realities in business call for greater cooperation between colleges, business and government in order to achieve high levels of economic performance. We need your help in preparing our students, faculty and administration for the global economy so that we can help propel this city, state and nation to new and unexplored heights.

We shall always be grateful for your generosity and we know that you will have a wonderful time at Gala on the Bluff 2013. Enjoy the evening.

*Sincerely,*

*Donald R. Andrews  
Dean*

## COLLEGE OF BUSINESS *History*

Established in 1937 under the direction of Samuella V. Totty, Ph.D., the first African-American woman to receive a Ph.D. in business, the College of Business humbly began as the Department of Commercial Education offering five courses, employing one teacher, and nine students. Now, over seventy-five years later, the College of Business at Southern University boasts over 1,200 students and offers four bachelors degree programs in two departments, The Department of Accounting and Finance and the Department of Management and Marketing. The mission of the College of Business is “to provide a quality business program that prepares students with diverse backgrounds for global career challenges and makes a positive contribution to the public and private sectors.” The College emphasizes student preparation for career Opportunities in the competitive global economy. Quality instruction, faculty research and community outreach in the form of small business development and incubation are all integral parts of the learning experiences provided for our stakeholders. The College of Business is accredited by the Association to Advance Collegiate Schools of Business (AACSB-International), which is recognized as the premier accrediting body for business schools in the world.

Among the objectives of the baccalaureate degree programs are: to facilitate lifelong learning opportunities; to prepare students to compete favorably in the global job market; to provide enhanced awareness of entrepreneurial challenges and rewards; and to prepare students for advanced studies in graduate and professional schools.

Since its inception, the College of Business has graduated over 7000 students; many of whom work at major corporations such as Cox Communications, General Motors, Allstate Insurance Company, International Paper, ExxonMobil, General Health Systems, The Coca-Cola Company, The Shaw Group, Walmart, Sam’s Club, Boeing, NASA, Ernst and Young, 3M, FDIC, Johnson and Johnson, Procter and Gamble, and many others.

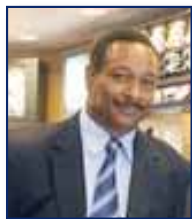






## GREETINGS

### SOUTHERN UNIVERSITY AND A & M COLLEGE



#### MESSAGE FROM DOCTORAL SPONSORS

It is hard to believe that 2013 marks the 11th anniversary of the College of Business' Gala on the Bluff Fundraiser. Our company has been a sponsor of the event since its inception and to see it continue to grow each year and become a premier homecoming event, is truly amazing!

The Louis & Brenda Henry Franchise Food Systems of Minnesota, Inc. believes in and supports the College of Business' mission to provide a quality business program that prepares students with diverse backgrounds for global career challenges and to makes positive contributions to the public and private sectors. For this reason we are delighted to support the Gala on the Bluff, which continues a decade-long relationship between the College of Business and Franchise Food Systems of Minnesota, Inc.

We hope you will return next year and continue to support this worthwhile cause.

On behalf of Franchise Food Systems of Minnesota, Inc., welcome!

*Sincerely,*

*Louis Henry  
Franchise Food Systems of Minnesota*



Agnes Andrews Allstate Insurance Agency is excited about the Eleventh Annual Gala on the Bluff and proud to be this year's title sponsor. Allstate is committed to education and actively recruits top African-American talent from Historically Black Colleges and Universities. We believe that only a well-educated, highly diverse workforce, comprised of people who have learned to work productively and creatively with individuals from a multitude of racial and ethnic, religious and cultural histories, can maintain America's global competitiveness in this increasingly diverse and interconnected world. We share the commitment of the Southern University College of Business in its pursuit of excellence. In this regard, Gala on the Bluff will provide the opportunity to deserving students to strive for excellence through this funding and awarding of scholarships. It is in fact the pursuit of excellence that compels our presence here at this important fundraising event.

To everyone who supports this scholarship effort, remember, where there is darkness, your gift sparks a raging fire of excitement and possibility for young adults. And, to this year's scholarship recipients, passionately pursue your dreams so that you too can soon light the candles of opportunity for countless others.

*Sincerely,*

*Agnes Andrews  
Agnes Andrews Allstate Insurance Agency*

## MESSAGE FROM THE GALA HOST *Committee Chair*

Welcome to Gala on the Bluff, and thank you for supporting the Southern University College of Business in this fundraising activity.

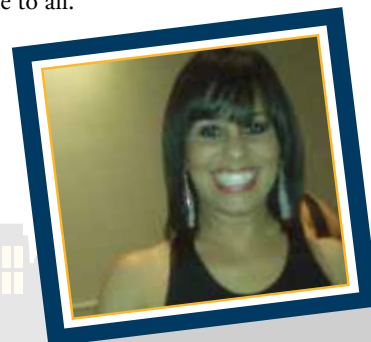
More than ever, it is important that we plan for the future by making good investments today. Education is a great investment that produces lifetime dividends. Your support in the educational pursuits of Southern University students will help to sharpen minds and build leaders that will develop solutions for a challenging world.

Our progress as a people and country are inextricably linked to the generation that we are preparing. By your current and continued support of this Gala, you accelerate the return on your investment and show your commitment to making education accessible to all.

As your gala chair, we are humbled to be part of this worthy cause.

*Very truly yours,*

*Kimberly Stephens, Chair  
Vice President  
Business 1st Bank*



## 2012-2013 SCHOLARSHIP *Recipients*

---



Bre-Ionne Armstead

Justin Evans

Janae Floyd

Danielle Gordon

Erica Hampton

Chantel Jefferson

Oliver Jones

Myron Lawson, Jr.

Ty'Eisha McCaleb

Gerald Perkins

Kyle Snedecor

Ciera Tate

Janielle Vining

Veronica Williams





# HONOREES



## JANET SIMMONS RAMI, PHD, RN

Janet S. Rami, has served as Dean of the School of Nursing at Southern University, Baton Rouge since 1986. It is under the leadership of Dean Rami that SUBR's baccalaureate nursing program achieved national recognition for success with students from disadvantaged backgrounds. The school was selected by Louisiana State Nurses Foundation as Louisiana's "Nursing School of the Year" twice within the last three years.

Dr. Rami's visionary leadership has been recognized by Johnson & Johnson, Magazine in 2008. She has received numerous awards such as the "Nurse Hero Award" in their **Campaign for Nursing's Future**, Nursing School Administrator of the Year, and inducted her into the state's "Nursing Hall of Fame". She has been commended twice by the Louisiana State Legislature and was appointed by the US Secretary for Health to a prestigious five-year term on the National Advisory Council on Nurse Education and Practice.

Her national and local presentations, awards, and publications are numerous and include participation as a panelist on Healthcare reform along with then US Secretary Donna Shalala. Dr. Rami was one of 10 Louisiana Leaders selected to meet with then First Lady Hilliary Clinton to discuss the future of healthcare. In 2013 Dr. Rami received the SUBR Grants Funding award called "**The Millionaire Club**" for securing over 1 million dollars in grant funding in one year. Over the last ten years she has secured over 10 million dollars in external funding for the School of Nursing.

Dr. Rami is a graduate of Dillard University and the University of Southern Mississippi and earned the PhD in Research Methodology from LSU. She also completed post doctoral studies at Harvard University in Academic Administration. She is the proud mother of three adult children (Chad, Cathy & Cheryl) who have blessed her with eight grand-children.



## LEON VALDRY

Mr. Leon Valdry, a native of Louisiana, spends time between his estates in Bueche, Louisiana and Beverly Hills, California. He is the personification of one, who is committed to family, friends and community. Those who know him well are impressed by his down-to-earth and un-assuming personality and he is renown for loving to share with his friends. Leon is the sole owner and President CEO of the Holly Park Plaza in the city of Inglewood, California and the shopping center is one of the largest in the city. Mr. Valdry indicates that the stimulus for his success began at Southern University where pride, moral values and respect were underscored, as well as, academic achievement. Most of his education was received at Southern University which motivated

him to become extraordinarily successful in real estate, both in Louisiana and California. His real estate venues consist of family housing, multiple units, commercial and industrial properties. Mr. Valdry's success was achieved through education, hard work and determination. He advises young people that "education and hard work are the keys to success."



## ANTHONY WILLIAMS

As CEO of Global Resource Solutions (GRS), Tony Williams is responsible for the planning, preparation, execution and delivery of government contracts totaling millions of dollars. Tony built GRS from one single contract to over 170 consultants to date that specialize in Intelligence, Security, Cyber, Information Technology, Strategic Planning, Human Capital, and Socio-Cultural support within the PACOM (J2) and Human Resources and Administrative professional services. GRS provides services to customers in the Intelligence Community, Department of Defense (DOD), Department of Treasury (FinCEN) and Department of Homeland Security (DHS). Under Tony's leadership, GRS was selected and approved as a company mentor

under the Office of Secretary of Defense (OSD) Mentor Protégé Program.

Tony is a visionary with over 26 years of extensive and progressive experience in intelligence, operations, human capital and training design. As a former military officer, he culminated his defense career as the Director of the Strategic Planning Group for the Chief of Staff at the Defense Intelligence Agency (DIA). Mr. Williams served over 20 years in the United States Army, retiring with the rank of Lieutenant Colonel and culminating his illustrious Army career as an experienced leader and Change Agent in the Intelligence Agencies. His military awards include the Legion of Merit, the Defense Meritorious Service Medal and the Meritorious Service Medal with 4th Oak Leaf Cluster, the Army Commendation Medal and the National Defense Service Medal.

Mr. Williams holds a Bachelor of Science degree in Political Science from Southern University in Baton Rouge, LA., Master of Science degree in Human Resource Management from Troy State University in Troy, AL., as well as Executive Leadership training from Harvard School of Business. He also holds several Masters certificates in Program Management, Aligning Project Management with Corporate Strategy and Organizational Change from George Washington University.

Tony is a native of Shreveport, LA and graduate of Southern University class of December 1985. Mr. Williams was commissioned in 1985 as Second Lieutenant (Field Artillery) through SU Army ROTC Program. He currently serves as a member on the Board of Advisors for Christian Embassy in Arlington, VA. and Capital Christian Center in Olympia, Washington. Tony has been married to his wife, Tina for over 27 years and they have two beautiful daughters, Alexis 24 and Dynastie 19.



Special Thanks to  
**Doctoral Sponsor**

**LOUIS HENRY**

Franchise Food Systems of Minnesota, Inc.



Contribution  
**\$15,000**



# *Special Thanks to Doctoral Sponsor*



214 S. Acadian Thruway  
Baton Rouge, LA 70806

Phone: 225.383.0877

Fax: 225.383.0878

Claims: 225.383.0877

Email: [AgnesAndrews@Allstate.com](mailto:AgnesAndrews@Allstate.com)

**Agnes Smith Andrews  
Insurance Agent/Owner**

**[www.allstate.com](http://www.allstate.com)**



**Contribution  
\$15,000**

Special Thanks to  
Bachelor Sponsor



Contribution  
**\$5,000**

Special Thanks to  
Bachelor Sponsor

**LEON VALDRY**

Contribution  
**\$5,000**

Special Thanks to  
Bachelor Sponsor

**SQUARE  
LEGACY  
GROUP**

Contribution  
**\$5,000**

Special Thanks to  
Bachelor Sponsor



Contribution  
**\$5,000**





Special Thanks to  
Bachelor Sponsor



Contribution  
**\$5,000**

Special Thanks to  
Bachelor Sponsor



Contribution  
**\$5,000**

Special Thanks to  
Bachelor Sponsor

LOUISIANA SLEEP  
DIAGNOSTICS  
AND  
HOME HEALTH SOLUTIONS

Contribution  
**\$5,000**

Special Thanks to  
Bachelor Sponsor



Contribution  
**\$5,000**

Special Thanks to  
Bachelor Sponsor

GERRY LANE  
BUICK GMC

Contribution  
**\$5,000**



SPECIAL THANKS TO *Associate Sponsors*

**CHAD AGUILLARD  
CONTRIBUTION \$2,000**

**LIVING FAITH CHRISTIAN CENTER  
CONTRIBUTION \$2,000**

**ISIAH & DELLA BLOUNT WARNER  
CONTRIBUTION \$2,000**

**LACY BAAHETH & ASSOCIATES  
CONTRIBUTION \$2,000**

**BAAHETH R&D LABORATORIES  
CONTRIBUTION \$2,000**

**JUMPSTART YOUR HEART  
CONTRIBUTION \$2,000**

**BATON ROUGE METRO AIRPORT  
CONTRIBUTION \$2,000**

**STPFCU  
CONTRIBUTION \$2,000**

**FRANCISCAN MISSIONARIES OF  
OUR LORD (FMOL)  
CONTRIBUTION \$2,000**

**SAM'S CLUB  
CONTRIBUTION \$2,000**

**WAFB  
CONTRIBUTION \$2,000**

**CH2MHILL  
CONTRIBUTION \$2,000**

**MOSIAC PHOSPHATES  
CONTRIBUTION \$2,000**

**COX COMMUNICATIONS  
CONTRIBUTION \$2,000**

**GEM DRUGS- DAMARIS LANDRY  
CONTRIBUTION \$2,000**

**EXXONMOBIL  
CONTRIBUTION \$2,000**

**GEORGE & SHIRLEY ROGERS  
CONTRIBUTION \$2,000**

**OCHSNER CLINIC FOUNDATION  
CONTRIBUTION \$2,000**

**B. J. RODGERS  
CONTRIBUTION \$2,000**

**HAVEN'S GATEWAY PERSONAL CARE FACILITY INC  
CONTRIBUTION \$2,000**

**DR. WARREN VALDRY  
CONTRIBUTION \$2,000**







## MENTOR *Sponsors*

### CONTRIBUTIONS \$500 - \$1,999

THOMAS MANAGEMENT  
VON CELESTINE  
BUSINESS 1ST BANK  
SOUTHERN UNIVERSITY OFFICE OF MEDIA &  
PUBLICATIONS  
FOX 44  
HALL DAVIS & SON  
ALDREMIA OMAR  
JOHN PIERRE  
TONY'S SEAFOOD  
BRENT'S PHARMACY  
BRC & ASSOCIATES  
SGS  
ASSOCIATED GROCERS  
NOMZAMO FASHIONS  
LOUISIANA SMALL BUSINESS DEVELOPMENT CENTER  
COMNET LLC  
TEXAS INSTRUMENTS

ELSENIA YOUNG  
SIMIEN AND SIMIEN  
NATHAN HOSSLEY  
ATTORNEY PRESTON CASTILLE  
GUARANTY BROADCASTING

## COMMITTEE OF 100

---

**The Committee of 100**--is a volunteer group composed of alumni, business partners and friends who use both their time and means to support the mission of the College of Business. All members have pledged a minimum of \$1000.00 per year, for five (5) years.

JAMES E. BROWN, SR  
GEORGE ROGERS  
CARLOTTA WASHINGTON  
DELOISE HOLMES, JR.  
GREG BARANCO  
ANTONIOUS PEGUES  
LESLIE SMITH





Whether you're seeking cutting edge and contemporary solutions to take your business to the next level, or straightforward advice on how to start your business, the LSBDC stands ready to assist with your business needs.

With our no-cost business information services, the LSBDC can help you gather industry or market statistics for your business or marketing plan, research specific market or industry trends, and identify competitors, suppliers or potential customers. Browse through our business services, and when you are ready, contact our team of business experts.

Director: Mr. William Campbell  
616 Harding Boulevard  
Baton Rouge , LA 70807  
Phone: 225-774-9213  
Email: [lsbdc.subr@lsbdc.org](mailto:lsbdc.subr@lsbdc.org)  
See more at: <http://www.lsbdc.org/subr>

---

## *A Very Special Thank You*

The Gala on the Bluff Scholarship Fundraiser Host Committee extends deep gratitude for the support of our Sponsorship Chair, Kimberly Stephens, who embraced this once-in-a-lifetime fundraising opportunity with incredible passion and generosity. Its rare that an organization can claim a supporter and leader as caring and generous as you. We truly have enjoyed working with you and will miss you dearly. We wish you well in your future endeavors!

Yours in Blue and Gold,  
College of Business



## ADVISORY COUNCIL LISTING

George Rogers - Chair  
Johnny Allen  
Willie L. Anderson  
Agnes Andrews  
Gregory Baranco  
Dennis Brown

Dorothy Rabb Brown  
James Brown  
Keith W. Bynam  
Von Celestine  
Jerry Cole  
Tyrone Dunn

Greg Foster  
Travis Foster  
Colette Givens  
Blaine Grimes  
Dawn Harris  
Louis Henry

Rhonda McMillan  
Jeffrey Moore  
Cedric Patton  
Chadwick Roberson  
W.E. Tucker  
Tracie Woods

## HOST COMMITTEE

Dr. Donald R. Andrews, Dean, SU College of Business  
Kimberly Stephens, Chair  
Michelle McCalope, Mistress of Ceremonies  
Robert Rene, Master of Ceremonies

Marcus Anderson  
Agnes Andrews  
Nayo Andrews  
Maleah Brooks  
Jacqueline Chase  
Judy Martin Davis (Lady Jag)  
Roman T. Gage

Glenda Hall  
Brian Hertzock  
Patricia Daniel  
Elvin Doherty  
Marilyn Doherty  
Eldridge Etienne  
Gwen Etienne

Adelea Holmes  
Nomzamo Iyanu  
Toni Jackson  
C. Denise Marcelle  
Mary Cobb-Marshall  
Vanessa Pitts  
Lee Audrey Porche

Marilyn Weatherspoon  
Gloria Whiten  
Diane Woods  
Elsenia Young

We are so grateful for the time, talent, resources, commitment and support contributed by the Gala Co-Chairs and Host Committee Members. Your generosity can never be repaid, but will long be remembered.

## SPECIAL THANKS

Belle of Baton Rouge Casino & Hotel  
The EMOTIONS  
Harry Anderson and the Jazzy Jazz Band  
Shaun Ward  
Burris Nursery

Monroe's Floral  
Sound South  
Roger Redding and Associates  
College of Business Faculty & Staff  
Cumulus Media



## COLLEGE OF BUSINESS

P. O. BOX 9723  
BATON ROUGE, LA. 70813  
Galaonthebluff.net

Dr. Donald R. Andrews, Dean  
(O) 225.771.5640 | (F) 225.771.5262  
(E) donald\_andrews@subr.edu